

Red & White Services Fleet List 1930-1975

1. Single Deck Buses

1.10 1929-37 Leyland Tiger TS

The first 6-cylinder Leyland Tigers were produced in 1927. These were designated TS1 with 17ft 6in wheelbase and 27ft 6in length which was the maximum length allowed in Britain until 1950. In 1929 the TS2 chassis was also available having the same wheelbase but of length 26ft resulting in a shorter rear overhang. In 1930 the TS3 was introduced which had a frame based on the Leyland Lion LT2 but with a 6-cylinder engine and 16ft 6in wheelbase. A more rounded Leyland body style also appeared at the same time. Production of the TS1, TS2 and TS3 ceased at the end of 1931. A new updated version, the TS4, was available from the end of 1931 until 1933 with a larger engine and heavier bodywork. Oil engines were also offered. There was no TS5, and the TS6 appeared in the spring of 1933 with a completely revised front end having the radiator flush with the front of the frame and a reduced bonnet length. The TS7 superseded the TS6 in 1935 and the TS8 appeared in 1937. Both petrol and oil engines were available but by 1939 the oil engine was the choice of most operators. Most of these types appeared in the Red & White fleet, but nearly all of them came from acquisitions, some with bus bodywork and some with coach bodywork. Only one TS3 and four TS4s were acquired new by Red & White. Many were rebodied by Duple.

Original Fleet No.	1951-75 No.	Registration	New	Chassis	Body	New Body	New / Previous owner; Transfers to or from other Red & White companies	Out
92		FV 1124	6/1930	Leyland Tiger TS2 (60888)	Burlingham C24-	1942 Duple B34C	ex- Wm David, Ogmores Vale 1/1941	6/1948
96	S532	WO 6429	6/1932	Leyland Tiger TS4 (1505)	N.C.M.E. C32R	1939 Duple B35C	New	1/1953
97		WO 6430	6/1932	Leyland Tiger TS4 (1506)	N.C.M.E. C32R	1939 Duple B35C	New	7/1950
98	S632	WO 6431	6/1932	Leyland Tiger TS4 (1507)	N.C.M.E. C32R	1939 Duple B35C	New	-/1952
99		WO 6432	6/1932	Leyland Tiger TS4 (1508)	N.C.M.E. C32R	1939 Duple B35C	New	12/1950
100	S129	DF 9186	12/1929	Leyland Tiger TS2 (60740)	London Lorries C26D	1941 Duple B35C	ex-Red Bus, Stroud 7/1934	9/1952
102		DF 6916	3/1929	Leyland Tiger TS2 (60157)	London Lorries C26D	1940 Duple B35C	ex-Red Bus, Stroud 7/1934	2/1950
103		KD 4778	3/1929	Leyland Tiger TS2 (60340)	Burlingham C30D	1939 Duple B35C	ex-McShanes via Red Bus, Stroud 7/1934	1/1949
104		GJ 5125	5/1930	Leyland Tiger TS2 (60943)	Strachan C30D	19?? B29-	ex-McShanes via Red Bus, Stroud 7/1934	-/1939
105		TH 2836	8/1932	Leyland Tiger TS4 (1672)	B35-		ex-Wm David, Ogmores Vale 1/1941	by 1/1944
133	S431	GE 7221	2/1930	Leyland Tiger rebuilt 1943 with parts from Leyland TD1 GE 7221 (70998)	1932 E.C.O.C. DP35R from a North Western Road Car C32R in 1943	Refurbished by Starkey (Rhondda)	Leyland TD1 ex-Glasgow Corporation Transport 12/1940	12/1952
181		WO 5292	6/1931	Leyland Tiger TS3 (61773)	Mumford C28R	1944/5 Burlingham B34F (or B32F)	New	6/1950
208		MT 2047	2/1929	Leyland Tiger TS2 (60131)	Dodson C20D; C22R by 4/35	1940 Duple B35C	ex-Gt. Western Express 10/1932	8/1949
209		MT 2048	2/1929	Leyland Tiger TS2 (60132)	Dodson C20D; C22R by 4/35	1939 Duple B37C	ex-Gt. Western Express 10/1932; transferred to United Welsh 1939, returned defective and body transferred to new chassis and re-reg'd EAX 353	-/
210		MT 2049	2/1929	Leyland Tiger TS2 (60133)	Dodson C26D; C22R by 4/35	1939 Duple B37C	ex-Gt. Western Express 10/1932; transferred to United Welsh 1939	-/1939
211		UW 9925	11/1929	Leyland Tiger TS2 (60710)	Dodson C20D; C22R by 4/35	1939 Duple B37C	ex-Gt. Western Express 10/1932; transferred to United Welsh 1939	-/1939
212		GC 8220	3/1930	Leyland Tiger TS2 (61067)	Dodson C20D; C22R by 4/35	1940 Duple B35C; B34C by 2/48	ex-Gt. Western Express 10/1932	4/1950
213		GC 8221	3/1930	Leyland Tiger TS2 (61068)	Dodson C20D; C22R by 4/35	1939 Duple B37C	ex-Gt. Western Express 10/1932; transferred to United Welsh 1939	-/1939

Red & White Services Fleet List 1930-1975

214	S330	GC 8222	3/1930	Leyland Tiger TS2 (61069)	Dodson C20D; C22R by 4/35	1940 Duple B35C	ex-Gt. Western Express 10/1932	6/1952
347		TF 6780	10/1931	Leyland Tiger TS4 (113)	Leyland B32F		ex-Imperial Motors 1/1937	7/1950
348	S732	TF 9578	9/1932	Leyland Tiger TS4 (1876)	Leyland B32R	1940 Duple B35C	ex-Imperial Motors 1/1937	11/1953
554		WN 1641	12/1928	Leyland Tiger TS2 (60307)	Leyland B30R	1935 Eclipse C32R	Transferred from United Welsh (554) 10/1940	11/1943
555		TE 6300	1/1929	Leyland Tiger TS1 (60178)	Leyland B30R	1935 Eclipse C32R	Transferred from United Welsh (555) 10/1940	11/1943
557		DR 5827	10/1929	Leyland Tiger TS1 (60761)	Leyland B31D	1942 Duple B35C	Transferred from United Welsh (557) 12/1940	7/1948
596	S2237	EU 6356	1937	Leyland Tiger TS7 (14425)	Leyland B36R		ex-Griffin Motor Co (69) 1950	5/1952
597	S2337	BTC 824	1937	Leyland Tiger TS7 (11555)	Leyland B32F		ex-Griffin Motor Co (74) 1950	12/1953
598	S1033	WJ 7184	1933	Leyland Tiger TS4 (2843)		1941 Duple B35R	ex-Griffin Motor Co (80) 1950	5/1952
599	S1133	WJ 7185	1933	Leyland Tiger TS4 (2844)		1941 Duple B35R	ex-Griffin Motor Co (81) 1950	5/1952
608	S1336	EU 6011	1936	Leyland Tiger TS7 (9743)	Leyland B35R		ex-Griffin Motor Co (62) 1950	5/1952
609	S1436	EU 6012	1936	Leyland Tiger TS7 (9744)	Leyland B35R		ex-Griffin Motor Co (63) 1950	12/1953
610	S135	AWT 233	1935	Leyland Tiger TS7 (6626)	Burlingham C32R	1942 Duple B36F	ex-Griffin Motor Co (64) 1950	5/1952
621	S2137	EU 6355	1937	Leyland Tiger TS7 (14424)	Leyland B36R		ex-Griffin Motor Co (68) 1950	5/1952
666	S2437	BDW 5	1937	Leyland Tiger TS8 (14611)	Weymann B33D	Later B35R	ex-Griffin Motor Co (99) 1950	5/1952
667	C1137	BDW 6	1937	Leyland Tiger TS8 (14612)	Weymann B33D	1948 Duple C35F #	ex-Griffin Motor Co (100) 1950	1952

Fleet Nos. in red are reallocated numbers from withdrawn vehicles

The 1948 Duple C35F body on BDW 6 was transferred to Leyland Tiger PS1/1 EU8526 (S2647) in 1953 and the chassis disposed of.



1929 Leyland Tiger MT 2049 in Great Western Express livery with Dodson C22D bodywork. This vehicle lost its body in a fire when 6 months old and was rebodied with another Dodson body (M Mayo Collection)



ex-Great Western Express 1930 Leyland Tiger GC 8221 (213) in early 1930s Red & White livery at Cheltenham Coach Station.

Red & White Services Fleet List 1930-1975



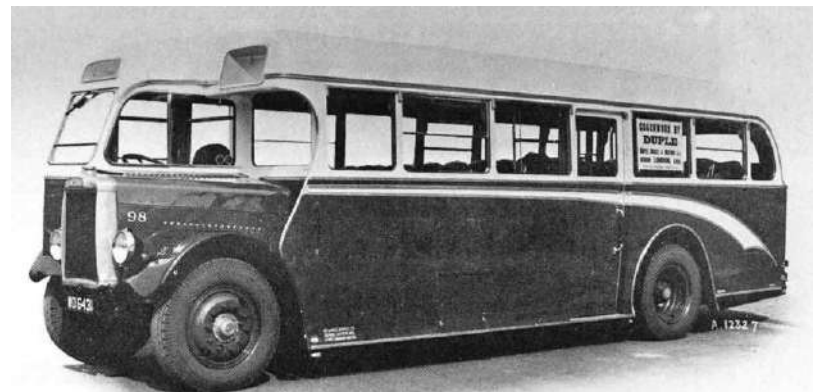
A view of the above Leyland Tiger MT 2049 (210) as rebodied by Duple and after transfer to United Welsh. (Alan B Cross)



GC 8221 (213) rebodied by Duple and photographed after transfer to United Welsh. (Alan B Cross)



1937 Leyland Tiger TS7 BTC 824 with Leyland B32F bodywork (later Red & White 597 and S2337) in original Griffin livery of dark red and grey outside the Butchers Arms in Blackwood. (Omnibus Society / Roy Marshall)



One of the few Red & White Leyland Tiger purchases WO 6431 (98), a 1932 TS4 rebodied in 1939 with Duple B35C coachwork. (Duple Coachbuilders Ltd)

Red & White Services Fleet List 1930-1975



GE 7221 was originally a Leyland Titan TD1 double decker, parts of which were used to rebuild a Leyland Tiger chassis in 1943. It was fitted with a second hand 1932 E.C.O.C. C32R body taken from a North Western Road Car Leyland Tiger TS4 chassis. Starkey of Ton Pentre, Rhondda refurbished the body which was fitted with bus seats. This photograph was taken c1950. *(Alan B Cross)*



Another view of GE 7221 after repainting and with the new 1951 fleet number S431.