

## Red & White Services Fleet List 1930-1975

### 1. Single Deck Buses

#### 1.8 1932 Albion Valkyrie PW65

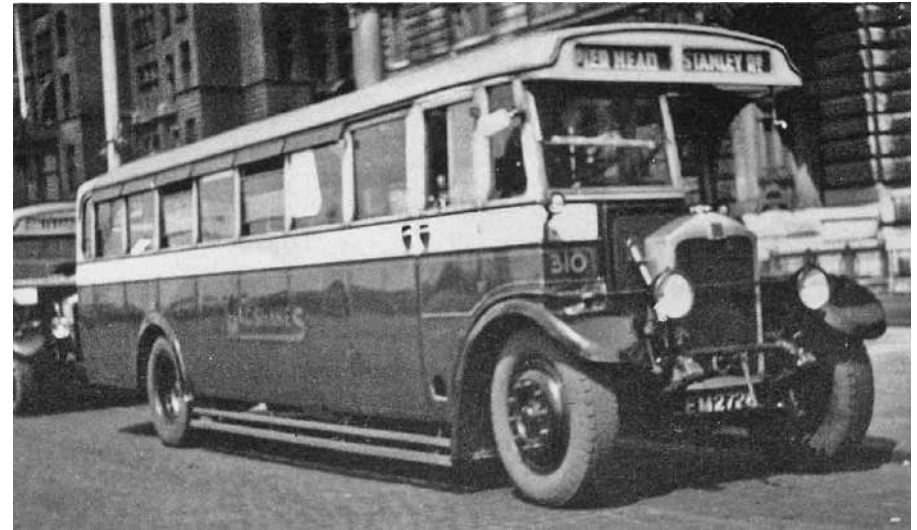
The other Albion 65 model introduced in 1931 was the PW65 with a wheelbase of 17ft 8in for 32-36 seat bodywork. Red & White's examples came from MacShanes which was acquired in 1932. They were all equipped with Roberts rear entrance bodywork. Red & White fitted them with Gardner 5LW oil engines in 1934-5.

Original Fleet No.	Registration	New	Chassis	Body	New Body	Previous owner; Transfers to or from other Red & White companies	Out
231	EM 2721	7/1932	Albion Valkyrie PW65 (16016B)	Roberts B35R		ex-MacShanes Motors 8/1933	c -/1939
232	EM 2722	7/1932	Albion Valkyrie PW65 (16016A)	Roberts B35R		ex-MacShanes Motors 8/1933	c -/1946
233	EM 2723	7/1932	Albion Valkyrie PW65 (16016E)	Roberts B35R	1944 Burlingham B34F	ex-MacShanes Motors 8/1933; on hire to South Midland 5/1947 – 1/1948	8/1948
234	EM 2724	7/1932	Albion Valkyrie PW65 (16016I)	Roberts B35R		ex-MacShanes Motors 8/1933	c -/1939
235	EM 2725	7/1932	Albion Valkyrie PW65 (16016H)	Roberts B35R		ex-MacShanes Motors 8/1933	c -/1939
236	EM 2726	7/1932	Albion Valkyrie PW65 (16016D)	Roberts B35R		ex-MacShanes Motors 8/1933	6/1947
237	EM 2727	8/1932	Albion Valkyrie PW65 (16016C)	Roberts B35R		ex-MacShanes Motors 8/1933	by 2/1948
238	EM 2728	8/1932	Albion Valkyrie PW65 (16016F)	Roberts B35R		ex-MacShanes Motors 8/1933	10/1947
239	EM 2729	8/1932	Albion Valkyrie PW65 (16016G)	Roberts B35R		ex-MacShanes Motors 8/1933	11/1939
240	EM 2730	8/1932	Albion Valkyrie PW65 (16016J)	Roberts B35R	1944 Burlingham B34F	ex-MacShanes Motors 8/1933; on hire to Newbury & District 5/1947 – 1/1950	6/1950
242	EM 2734	8/1932	Albion Valkyrie PW65 (16017I)	Roberts B35R		ex-MacShanes Motors 8/1933	c -/1939
243	EM 2735	8/1932	Albion Valkyrie PW65 (16018B)	Roberts B35R; B32R by 4/35	1944 Burlingham B34F	ex-MacShanes Motors 8/1933; on hire to Newbury & District 5/1947 – 1/1950	6/1950
244	EM 2736	8/1932	Albion Valkyrie PW65 (16018F)	Roberts B35R	1944 Burlingham B34F	ex-MacShanes Motors 8/1933; on hire to Newbury & District 5/1947 – 1/1950	8/1950
245	EM 2737	8/1932	Albion Valkyrie PW65 (16017J)	Roberts B35R; B32R by 4/35		ex-MacShanes Motors 8/1933	2/1946
246	EM 2738	9/1932	Albion Valkyrie PW65 (16017L)	Roberts B35R		ex-MacShanes Motors 8/1933	-/1948
247	EM 2739	9/1932	Albion Valkyrie PW65 (16018A)	Roberts B35R		ex-MacShanes Motors 8/1933	12/1942
248	EM 2740	9/1932	Albion Valkyrie PW65 (16018D)	Roberts B35R; B32R by 4/35		ex-MacShanes Motors 8/1933	c -/1939
249	EM 2741	12/1932	Albion Valkyrie PW65 (16017H)	Roberts B35R; B32R by 4/35	1944 Burlingham B34F; B36F by 2/48	ex-MacShanes Motors 8/1933; on hire to Newbury & District 5/1947 – 12/1049	12/1949
250	EM 2742	12/1932	Albion Valkyrie PW65 (16018E)	Roberts B35R; B32R by 4/35		ex-MacShanes Motors 8/1933	-/1948
251	EM 2743	12/1932	Albion Valkyrie PW65 (16018C)	Roberts B35R	1944 Burlingham B34F	ex-MacShanes Motors 8/1933; on hire to South Midland 5/1947 – 1/1948	5/1948
252	EM 2688	3/1932	Albion Valkyrie PW65 (16005K)	Roberts B35R		ex-MacShanes Motors 8/1933; originally Albion demonstrator	by 2/1948

## Red & White Services Fleet List 1930-1975



Roberts-bodied PW65s including EM 2734, EM 2736, EM 2737 and EM 2735 ready for delivery to MacShanes in 1932. (Roberts)



1932 Albion Valkyrie PW65 EM 2728 as MacShanes 310 which later became Red & White 238.



A wartime photo of Albion PW65 EM 2742 (250) in Monmouth.



EM 2723 (233) rebodied with utility Burlingham B34F body. (John Jenkins Collection)